

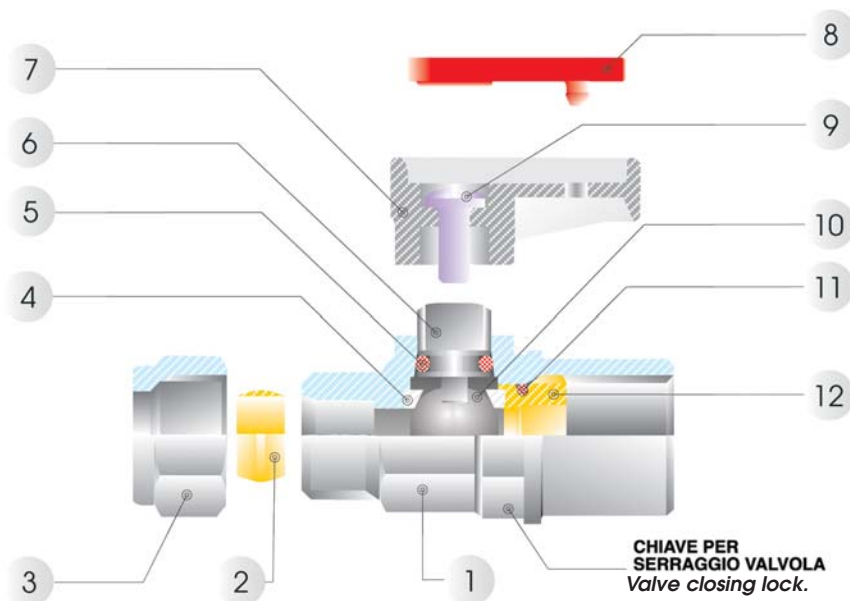


G

Serie / Series

Ghilux

Valvole a sfera
Ball valves



OMOLOGAZIONE
BG / EC-87 / 99 / 106
COMPLY WITH EN - 331

Scheda Materiali | Specifications

- | | |
|---|---|
| 1 Corpo in Ottone cromato | 1 Chrome Nickel-plated Brass Body |
| 2 Ogiva in Ottone (PTFE a richiesta) | 2 Brass Olive(if Requested PTFE) |
| 3 Dado in Ottone cromato | 3 Chrome Nickel-plated Brass Nut |
| 4 Guarnizione sede sfera in PTFE | 4 PTFE Seats |
| 5 Guarnizione O-RING in NBR 70 (FKM a richiesta) | 5 NBR 70 Seal O-RING (FKM if required) |
| 6 Albero in Ottone cromato | 6 Chrome Nickel-plated Brass Spindle |
| 7 Maniglietta in PA66 Caricato vetro | 7 PA66 Glass reinforced Handle |
| 8 Piastrina in PA6 | 8 PA6 Plate |
| 9 Vite in acciaio | 9 Steel Screw |
| 10 Sfera in Ottone cromato | 10 Chrome Nickel-plated Brass Ball |
| 11 Guarnizione O-RING in NBR 70 (FKM a richiesta) | 11 NBR 70 Seal O-RING (FKM if required) |
| 12 Ghiera o raccordo in Ottone | 12 Brass Fitting |

Pressioni | Pressures

Pressione minima / Minimum Pressure: 0.99 bar (0.099MPa)
Pressione massima / Maximum pressure: 20 bar (2 MPa)

Temperature | Temperatures

Temperatura minima / Minimum temperature: -20 °C
Temperatura massima / Maximum temperature: +80 °C

Filettature | Threads

Gas conica conforme ISO 7.1, BS 21, DIN 2999 / Tapered gas in conformity with ISO 7.1, BS 21, DIN 2999.
Gas cilindrica conforme ISO 228 Classe A / Parallel gas in conformity with ISO 228 Class A.

Tubi di collegamento | Connection Tubes

Tubi in rame, tubi metallici in genere, raccorderia varia. PA6, PA11, ecc. utilizzando l'apposita bussolina di rinforzo art. 10770.

Tubes made in copper, metal in general and various fittings. PA6, PA11 etc. with an inside support bush art 10770.

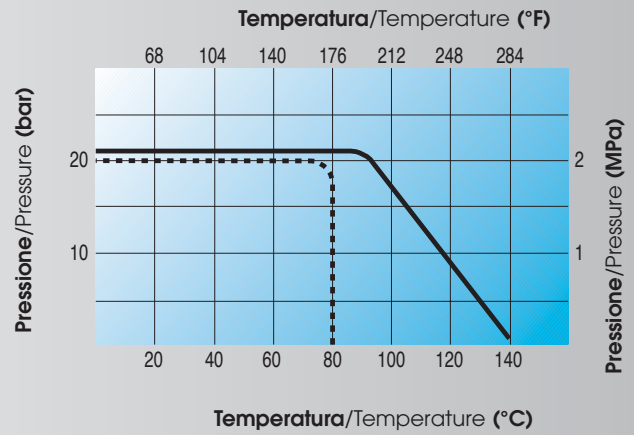
Fluidi compatibili | Fluids

Aria compressa, acqua, oli.
1° e 2° famiglia di gas a media pressione.
3° famiglia di gas a bassa pressione.

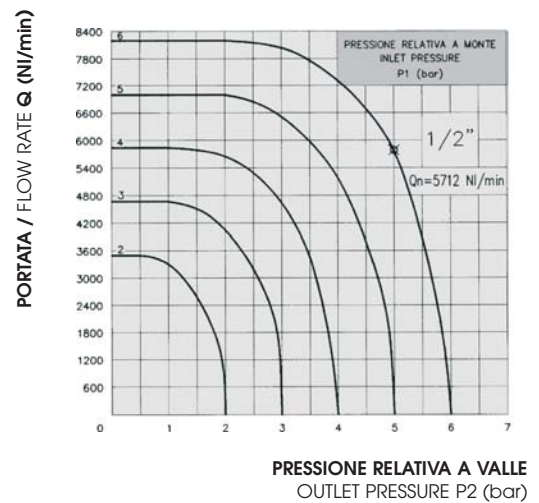
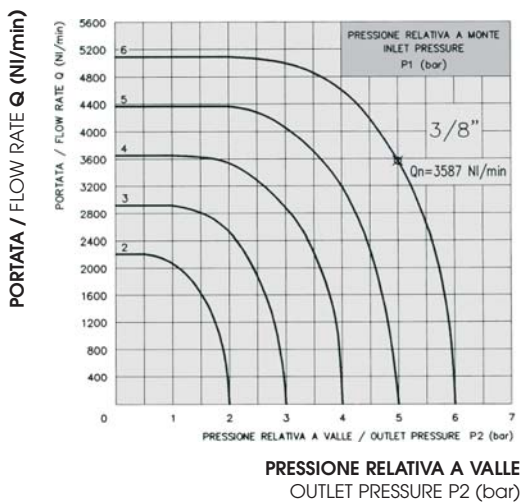
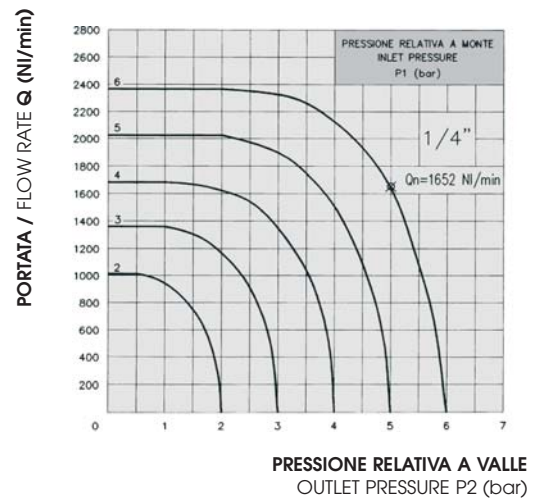
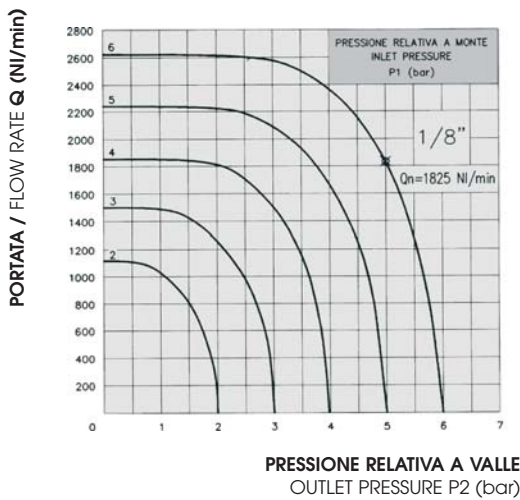
Compressed air, water, oils.
1st and 2nd family gases at medium pressure.
3rd family gases at low pressure.

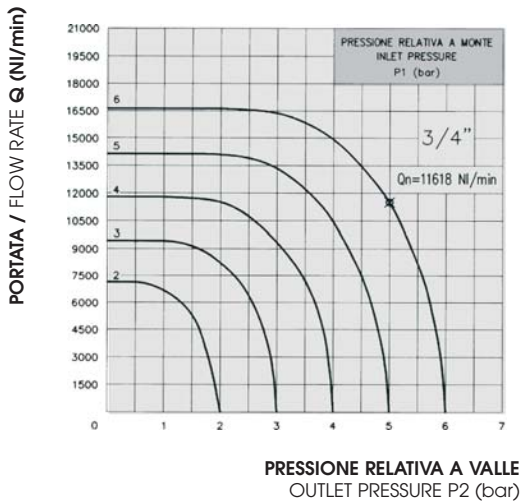
DIAGRAMMA PRESSIONE-TEMPERATURA
PRESSURE-TEMPERATURE RATINGS DIAGRAM

- PTFE + NBR
- PTFE + FKM



CURVE CARATTERISTICHE DI FLUSSO PER ARIA
RELATIVE ALLE VALVOLE A SFERA GHILUX ART. 6400 FEMMINA-FEMMINA
CHARACTERISTIC CURVES OF FLOW FOR AIR
PERTINENT TO THE BALL VALVES GHILUX ART. 6400 FEMALE-FEMALE





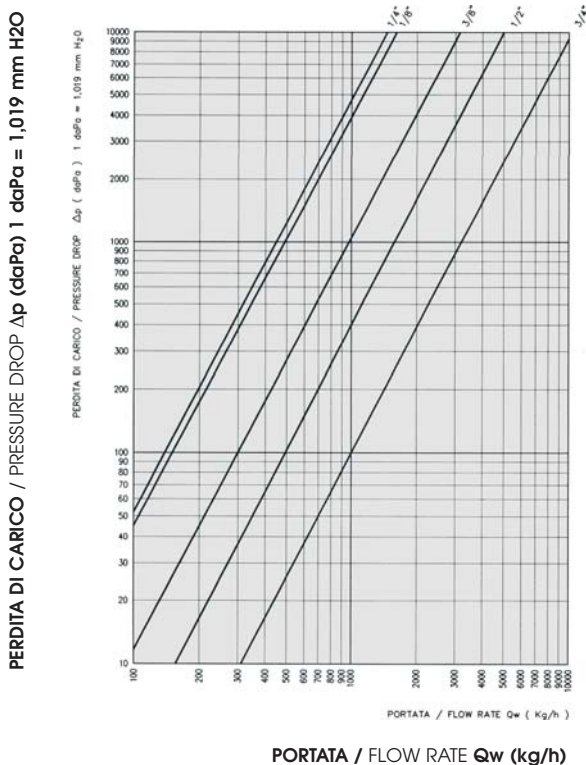
Sui vari diagrammi é evidenziato il valore di Q_n relativo ad una pressione $P_1 = 6$ bar e ad una pressione $P_2 = 5$ bar.

On the different diagrams is marked the value of flow rate Q_n pertinent to a pressure $P_1 = 6$ bar and to a pressure $P_2 = 5$ bar.

CERTIFICATO DI PROVA N° 36794 RILASCIATO DALL' "ISTITUTO GIORDANO" IN DATA 13/06/1990.

TEST CERTIFICATE N° 36794 ISSUED BY THE "ISTITUTO GIORDANO" ON THE 13/06/1990.

DIAGRAMMA DELLA CARATTERISTICA PORTATA-PERDITA DI CARICO RELATIVO ALLE VALVOLE A SFERA GHILUX ART. 6400 FEMMINA-FEMMINA PER ACQUA
 DIAGRAM OF THE FLOW RATE AND PRESSURE DROP CHARACTERISTICS PERTINENT TO THE BALL VALVES GHILUX ART. 6400 FEMALE-FEMALE FOR WATER



COEFFICIENTI DI PORTATA K_v
 FLOW RATE FACTORS K_v

Riportiamo in tabella il coefficiente di portata K_v delle valvole a sfera GHILUX, ricordando che tale coefficiente rappresenta la quantità d'acqua che attraversa la valvola nell'unità di tempo (Kg/h) alla temperatura di 15.5° C e che determina una caduta di pressione unitaria.

On the following table we specify the flow rate factor K_v of the ball valves GHILUX, we remind You that this factor represent the quantity of water that cross the valve in the unit time (Kg/h) at the temperature of 15.5° C and it determines a drop of unitary pressure.

Misura Size	Coefficiente di Portata Idraulica Factor of hydraulic flow rate K_v (Kg/h)
1/8"	1614
1/4"	1461
3/8"	3164
1/2"	5051
3/4"	10274

CERTIFICATO DI PROVA N. 36547 RILASCIATO DALL' "ISTITUTO GIORDANO" IN DATA 31/05/1990
 TEST CERTIFICATE N. 36547 ISSUED BY THE "ISTITUTO GIORDANO" ON THE 31/05/199

COME ORDINARE

Le valvole a sfera standard della serie GHILUX prevedono:

- Trattamento superficiale di CROMATURA
- Ogiva in OTTONE
- Maniglia CORTA
- Piastrina ROSSA

Gli articoli standard possono essere ordinati specificando solo CODICE, MISURA, QUANTITA'.

Ogni variazione allo standard deve essere specificata sull'ordine mediante una descrizione (es. Maniglia Lunga, Piastrina Verde, ecc.).

HOW TO ORDER

The ball valves GHILUX series are supplied with:

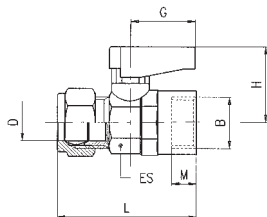
- Surface treatment of CHROME-NICKEL PLATED
- BRASS Olive
- SHORT Handle
- RED Plate

To order the standard items simply specify the ARTICLE CODE, SIZE and QUANTITY.

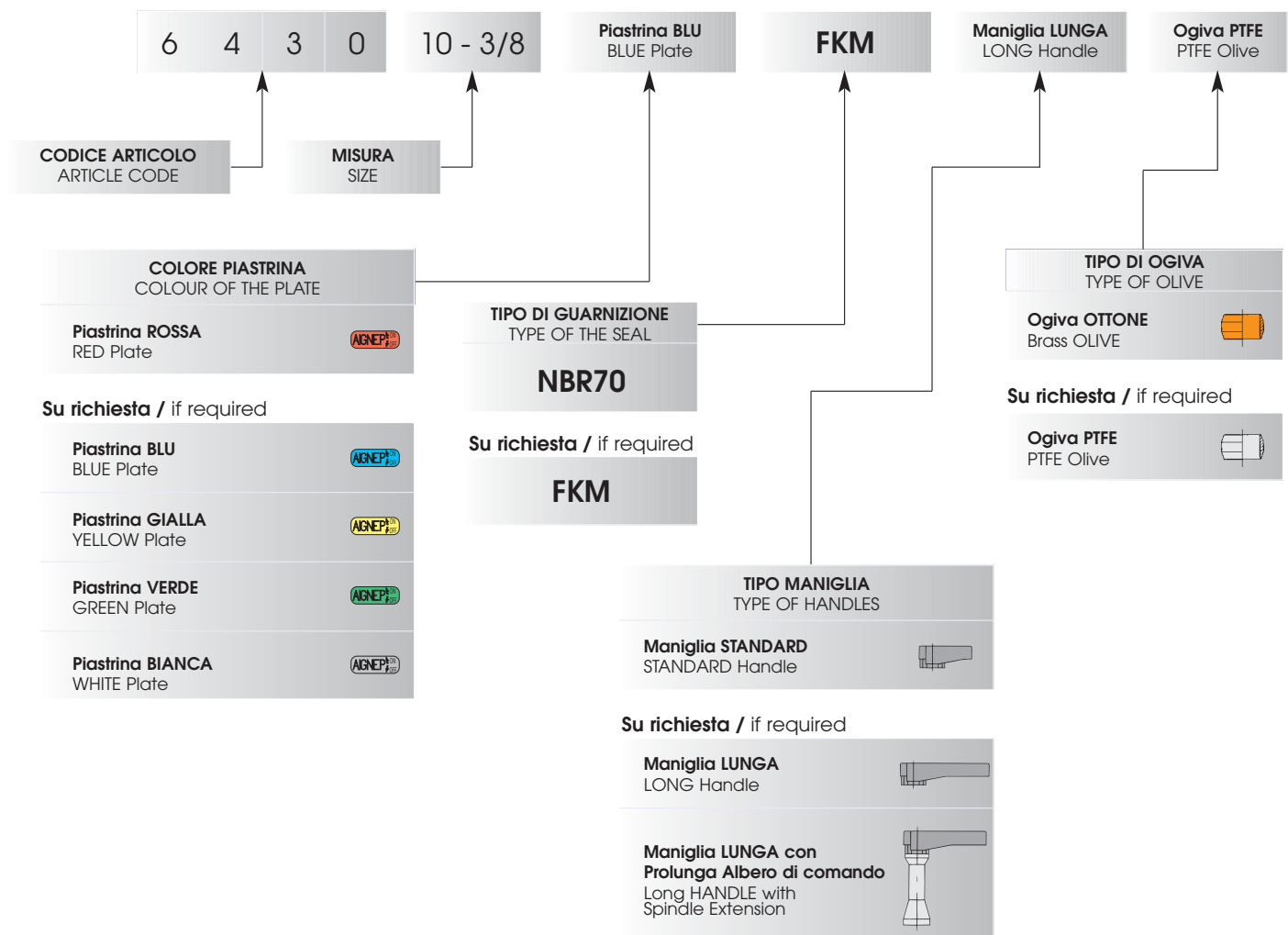
Every kind of changes must be specified on the order using a description (ex. LONG handle, GREEN plate, etc.).

6430

TUBO - FEMMINA G ISO 228 - TUBE - FEMALE G ISO 228

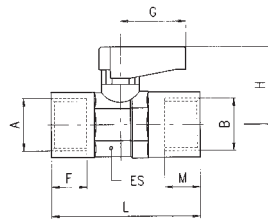


D	B	DN	ES	M	L	G	H	Conf. Pack.
6	- 1/8	5.5	14-15	7	41	19	21	25
8	- 1/8	5.5	14-15	7	43	19	21	25
8	- 1/4	5.5	14-15	8	43	19	21	25
10	- 3/8	8	18-19	9	48	19	22	10
12	- 3/8	8	18-19	9	49	19	22	10
14	- 1/2	10	22-23	10	55.5	26	30.5	10
15	- 1/2	10	22-23	10	55.5	26	30.5	10
16	- 3/4	14	28-30	12	63.5	26	33	5
18	- 3/4	14	28-30	12	63.5	26	33	5



6300

FEMMINA RP ISO 7 - FEMMINA RP ISO 7 - FEMALE RP ISO 7 - FEMALE RP ISO 7

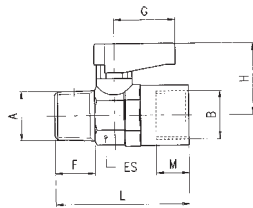


A	B	(DN)	ES	F	M	L	G	H	Conf. Pack.
1/8	- 1/8	5.5	14-15	7.4	7.4	36	19	21	25
1/4	- 1/4	5.5	14-15	11	11	43	19	21	25
3/8	- 3/8	8	18-19	11.4	11.4	47	19	22	10
1/2	- 1/2	10	22-23	15	15	59	26	30.5	10
3/4	- 3/4	14	28-30	16.3	16.3	67	26	33	5



6310

MASCHIO CONICO R ISO 7 - FEMMINA RP ISO 7 - TAPER MALE R ISO 7 - FEMALE RP ISO 7

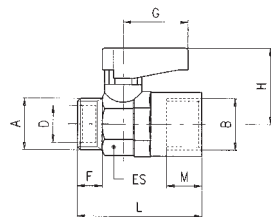


A	B	(DN)	ES	F	M	L	G	H	Conf. Pack.
1/8	- 1/8	5.5	14-15	7.4	7.4	36	19	21	25
1/4	- 1/8	5.5	14-15	11	7.4	40.5	19	21	25
1/4	- 1/4	5.5	14-15	11	11	43	19	21	25
3/8	- 3/8	8	18-19	11.4	11.4	46	19	22	10
1/2	- 1/2	10	22-23	15	15	57	26	30.5	10
3/4	- 3/4	14	28-30	16.3	16.3	63	26	33	5



6320

MASCHIO CILINDRICO GA ISO 228 - FEMMINA RP ISO 7 - PARALLEL MALE GA ISO 228 - FEMALE RP ISO 7

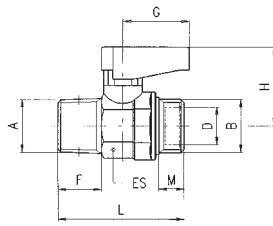


A	B	(DN)	ES	D	F	M	L	G	H	Conf. Pack.
1/8	- 1/8	5.5	14-15	6.2	7	7.4	34.5	19	21	25
1/4	- 1/8	5.5	14-15	8.2	8	7.4	35.5	19	21	25
1/4	- 1/4	5.5	14-15	8.2	8	11	38	19	21	25
3/8	- 3/8	8	18-19	10.2	9	11.4	41.5	19	22	10
1/2	- 1/2	10	22-23	15.2	10	15	50	26	30.5	10
3/4	- 3/4	14	28-30	18.2	12	16.3	56.5	26	33	5



6330

MASCHIO CONICO R ISO 7 - MASCHIO CILINDRICO GA ISO 228 - TAPER MALE R ISO 7 - PARALLEL MALE GA ISO 228

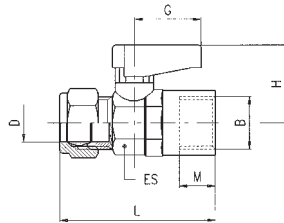


A	B	DN	ES	D	F	M	L	G	H	Conf. Pack.
1/8	- 1/8	5.5	14-15	6.2	7.4	7	33.5	19	21	25
1/8	- 1/4	5.5	14-15	8.2	7.4	8	33.5	19	21	25
1/4	- 1/8	5.5	14-15	6.2	11	7	38	19	21	25
1/4	- 1/4	5.5	14-15	8.2	11	8	38	19	21	25
3/8	- 3/8	8	18-19	10.2	11.4	9	41.5	19	22	10
1/2	- 1/2	10	22-23	15.2	15	10	49	26	30.5	10
3/4	- 3/4	14	28-30	18.2	16.3	12	55.5	26	33	5



6340

TUBO - FEMMINA RP ISO 7 - TUBE - FEMALE RP ISO 7

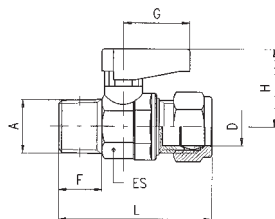


D	B	DN	ES	M	L	G	H	Conf. Pack.
6	- 1/8	5.5	14-15	7.4	41.5	19	21	25
8	- 1/8	5.5	14-15	7.4	43	19	21	25
8	- 1/4	5.5	14-15	11	46	19	21	25
10	- 3/8	8	18-19	11.4	50.5	19	22	10
12	- 3/8	8	18-19	11.4	51.5	19	22	10
14	- 1/2	10	22-23	15	61.5	26	30.5	10
15	- 1/2	10	22-23	15	61.5	26	30.5	10
16	- 3/4	14	28-30	16.3	68	26	33	5
18	- 3/4	14	28-30	16.3	68	26	33	5



6350

MASCHIO CONICO R ISO 7 - TUBO - TAPER MALE R ISO 7 - TUBE

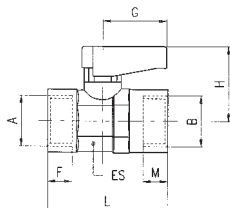


A	D	DN	ES	F	L	G	H	Conf. Pack.
1/8	- 6	5.5	14-15	7.4	40.5	19	21	25
1/8	- 8	5.5	14-15	7.4	41.5	19	21	25
1/4	- 6	5.5	14-15	1.1	46	19	21	25
1/4	- 8	5.5	14-15	11	45	19	21	25
3/8	- 10	8	18-19	11.4	50.5	19	22	10
3/8	- 12	8	18-19	11.4	51.5	19	22	10
1/2	- 14	10	22-23	15	59.5	26	30.5	10
1/2	- 15	10	22-23	15	59.5	26	30.5	10
3/4	- 16	14	28-30	16.3	67	26	33	5
3/4	- 18	14	28-30	16.3	67	26	33	5



6400

FEMMINA G ISO 228 - FEMMINA G ISO 228 - FEMALE G ISO 228 - FEMALE G ISO 228

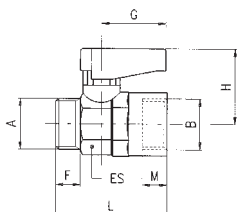


A	B	DN	ES	F	M	L	G	H	Conf. Pack.
1/8	- 1/8	5.5	14-15	7	7	35	19	21	25
1/4	- 1/4	5.5	14-15	8	8	37	19	21	25
3/8	- 3/8	8	18-19	9	9	42	19	22	10
1/2	- 1/2	10	22-23	10	10	49	26	30.5	10
3/4	- 3/4	14	28-30	12	12	58	26	33	5



6410

MASCHIO CILINDRICO GA ISO 228 - FEMMINA G ISO 228 - PARALLEL MALE GA ISO 228 - FEMALE G ISO 228

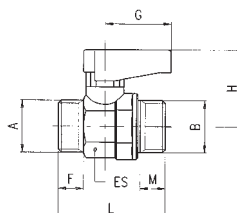


A	B	DN	ES	F	M	L	G	H	Conf. Pack.
1/8	- 1/8	5.5	14-15	7	7	34	19	21	25
1/4	- 1/8	5.5	14-15	8	7	35	19	21	25
1/4	- 1/4	5.5	14-15	8	8	35	19	21	25
3/8	- 3/8	8	18-19	9	9	39	19	22	10
1/2	- 1/2	10	22-23	10	10	45	26	30.5	10
3/4	- 3/4	14	28-30	12	12	52	26	33	5



6420

MASCHIO CILINDRICO GA ISO 228 - MASCHIO CILINDRICO GA ISO 228 - PARALLEL MALE GA ISO 228 - PARALLEL MALE GA ISO 228

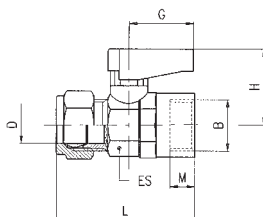


A	B	DN	ES	F	M	L	G	H	Conf. Pack.
1/8	- 1/8	5.5	14-15	7	7	32	19	21	25
1/8	- 1/4	5.5	14-15	7	8	32	19	21	25
1/4	- 1/4	5.5	14-15	8	8	33	19	21	25
3/8	- 1/4	5.5	14-15	9	8	33	19	21	25
3/8	- 3/8	8	18-19	9	9	37	19	22	10
1/2	- 3/8	8	18-19	10	9	37	19	22	10
1/2	- 1/2	10	22-23	10	10	42	26	30.5	10
3/4	- 1/2	10	22-23	12	10	42	26	30.5	10
3/4	- 3/4	14	28-30	12	12	49	26	33	5



6430

TUBO - FEMMINA G ISO 228 - TUBE - FEMALE G ISO 228

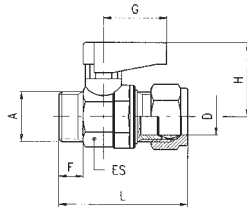


D	B	DN	ES	M	L	G	H	Conf. Pack.
6	- 1/8	5.5	14-15	7	41	19	21	25
8	- 1/8	5.5	14-15	7	43	19	21	25
8	- 1/4	5.5	14-15	8	43	19	21	25
10	- 3/8	8	18-19	9	48	19	22	10
12	- 3/8	8	18-19	9	49	19	22	10
14	- 1/2	10	22-23	10	55.5	26	30.5	10
15	- 1/2	10	22-23	10	55.5	26	30.5	10
16	- 3/4	14	28-30	12	63.5	26	33	5
18	- 3/4	14	28-30	12	63.5	26	33	5



6440

MASCHIO CILINDRICO GA ISO 228 - TUBO - PARALLEL MALE GA ISO 228 - TUBE



A	D	DN	ES	F	L	G	H	Conf. Pack.
1/8	- 6	5.5	14-15	7	39	19	21	25
1/8	- 8	5.5	14-15	7	40	19	21	25
1/4	- 6	5.5	14-15	8	40	19	21	25
1/4	- 8	5.5	14-15	8	41	19	21	25
1/4	- 10	5.5	14-15	8	44	19	21	25
3/8	- 8	5.5	14-15	9	43	19	21	25
3/8	- 10	8	18-19	9	46	19	22	10
3/8	- 12	8	18-19	9	47	19	22	10
3/8	- 14	8	18-19	9	50.5	19	22	10
3/8	- 15	8	18-19	9	50.5	19	22	10
1/2	- 10	8	18-19	10	49	19	22	10
1/2	- 12	8	18-19	10	50	19	22	10
1/2	- 14	10	22-23	10	52.5	26	30.5	10
1/2	- 15	10	22-23	10	52.5	26	30.5	10
3/4	- 14	10	22-23	12	56.5	26	30.5	10
3/4	- 15	10	22-23	12	56.5	26	30.5	10
3/4	- 16	14	28-30	12	60.5	26	33	5
3/4	- 18	14	28-30	12	60.5	26	33	5

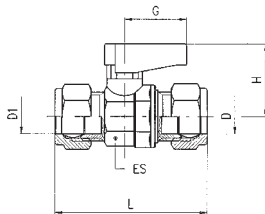
• Nelle misure 1/4-8, 1/4-10, 3/8-14, 3/8-15 il dado, il bicono e il filetto A sono all'opposto della figura.

• In the sizes 1/4-8, 1/4-10, 3/8-14, 3/8-15 the nut, the double cone and the thread A are at the opposite side of the picture.



6450

TUBO - TUBO - TUBE - TUBE

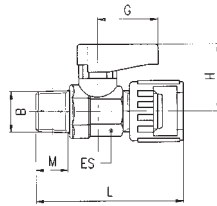


D1	D	DN	ES	L	G	H	Conf. Pack.
6	- 6	5.5	14-15	46	19	21	25
6	- 8	5.5	14-15	48	19	21	25
8	- 8	5.5	14-15	48	19	21	25
10	- 8	5.5	14-15	51	19	21	25
10	- 10	8	18-19	55	19	22	10
10	- 12	8	18-19	56	19	22	10
12	- 12	8	18-19	57	19	22	10
14	- 10	8	18-19	59.5	19	22	10
14	- 12	8	18-19	60.5	19	22	10
15	- 10	8	18-19	59.5	19	22	10
15	- 12	8	18-19	60.5	19	22	10
14	- 14	10	22-23	63	26	30.5	10
15	- 14	10	22-23	63	26	30.5	10
15	- 15	10	22-23	63	26	30.5	10
16	- 14	10	22-23	68	26	30.5	10
16	- 15	10	22-23	68	26	30.5	10
18	- 14	10	22-23	68	26	30.5	10
18	- 15	10	22-23	68	26	30.5	10
18	- 16	14	28-30	71	26	33	5
18	- 18	14	28-30	71	26	33	5



6460

DADO CAPETTATO - MASCHIO CONICO R ISO 7 - MILLED NUT - TAPER MALE R ISO 7

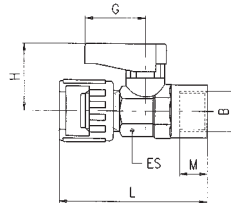


B	DN	ES	M	L	G	H	Conf. Pack.
1/8	5.5	14-15	7.4	44	19	21	10
1/4	5.5	14-15	11	49.5	19	21	10
3/8	8	18-19	11.4	50	19	21	10



6470

DADO CAPETTATO - FEMMINA G ISO 228 - MILLED NUT - FEMALE G ISO 228

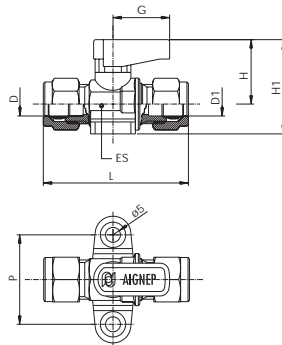


B	DN	ES	M	L	G	H	Conf. Pack.
1/8	5.5	14-15	7	46	19	21	10
1/4	5.5	14-15	8	46	19	21	10



6500

VALVOLA CON PIEDINI D'ANCORAGGIO TUBO-TUBO - FOOT MOUNTED BALL VALVE TUBE-TUBE

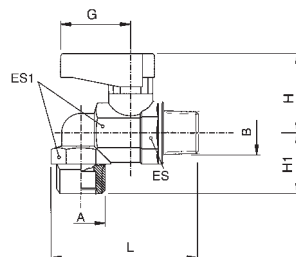


D	D1	DN	ES	L	H	H1	G	P	Conf. Pack.	
8	-	8	5.5	14-15	50	21	32	19	30	10



6540

VALVOLA A L MASCHIO CILINDRICO GA ISO 228-MASCHIO CONICO R ISO 7 - ELBOW VALVE PARALLEL MALE GA ISO 228-TAPER MALE R ISO 7

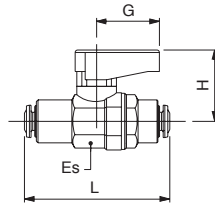


A	B	DN	ES	ES1	L	H	H1	G	Conf. Pack.	
1/4	-	1/4	5.5	14-15	17	48	21	17	19	10



6560

VALVOLA CON ATTACCHI TUBO AUTOMATICI - VALVE WITH PUSH-IN CONNECTIONS



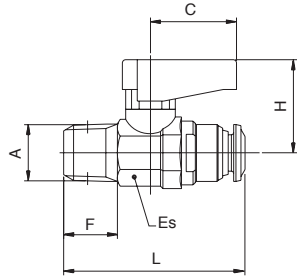
Tubo Tube	Tubo Tube	DN	ES	L	G	H	Conf. Pack.	
4	-	4	3	14-15	44	19	21	10
6	-	6	5	14-15	48	19	21	10
8	-	8	5.5	14-15	48	19	21	10



NO GAS

6570

VALVOLA MASCHIO CONICO R ISO 7 - ATTACCO TUBO AUTOMATICO - TAPER MALE R ISO 7 - PUSH-FIT CONNECTIONS



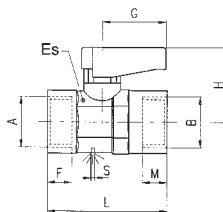
A	Tubo Tube	F	Es	L	C	H	Conf. Pack.	
1/8	-	4	8.5	14-15	35	19	21	10
1/8	-	6	8.5	14-15	40	19	21	10
1/8	-	8	8.5	14-15	41.5	19	21	10
1/4	-	6	12.5	14-15	38.5	19	21	10
1/4	-	8	12.5	14-15	45.5	19	22	10



NO GAS

6600

VALVOLA CON FORO DI SFIATO FEMMINA G ISO 228 - VALVE EXHAUST HOLE FEMALE G ISO 228 - FEMALE G ISO 228



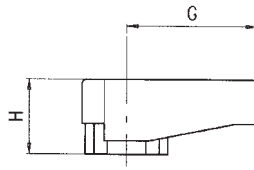
A	B	DN	ES	F	M	L	G	H	S	Conf. Pack.
1/8	-	1/8	5.5	14-15	7	7	35	19	21 2.5	10
1/4	-	1/4	5.5	14-15	8	8	37	19	21 2.5	10
3/8	-	3/8	8	18-19	9	9	42	19	22 3	10



NO GAS

6900

MANIGLIA STANDARD - STANDARD HANDLE



Modello Type	G	H	Conf. Pack.
A	19	11	25
B	26	15	25

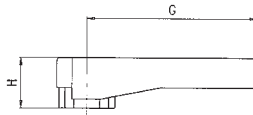
A = Per valvole da 1/8, 1/4, 3/8.
A = For valves of 1/8, 1/4, 3/8.

B = Per valvole da 1/2, 3/4.
B = For valves of 1/2, 3/4.



6910

MANIGLIA LUNGA - LONG HANDLE



Modello Type	G	H	Conf. Pack.
A	35	11	25
B	50	15	25

A = Per valvole da 1/8, 1/4, 3/8.
A = For valves of 1/8, 1/4, 3/8.

B = Per valvole da 1/2, 3/4.
B = For valves of 1/2, 3/4.



Prolunga albero di comando | Spindle Extension

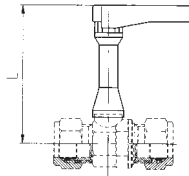
Tutti i modelli di valvola a sfera di questa serie possono essere forniti con asta di manovra prolungata (vedi figura). Per l'ordinazione vedi le istruzioni nella pagina "COME ORDINARE" posta all'inizio della serie.

All the valves "GHILUX" can be supplied with a spindle extension (see the picture). To order use the same instructions mentioned in the previous page "HOW TO ORDER".



6915

PROLUNGA ALBERO DI COMANDO (CON MANIGLIA LUNGA, VITE, PIASTRINA)
SPINDLE EXTENSION (WITH LONG HANDLE, SCREW, PLATE)



Modello Type	Misura valvola Valve size	L	Conf. Pack.
A	1/8	58	50
	1/4	58	
	3/8	59	
B	1/2	68	25
	3/4	70	

6920

PIASTRINA COLORATA
COLOURED PLATE



Modello Type	Conf. Pack.
A	100
B	100

A = Per valvole da 1/8, 1/4, 3/8.

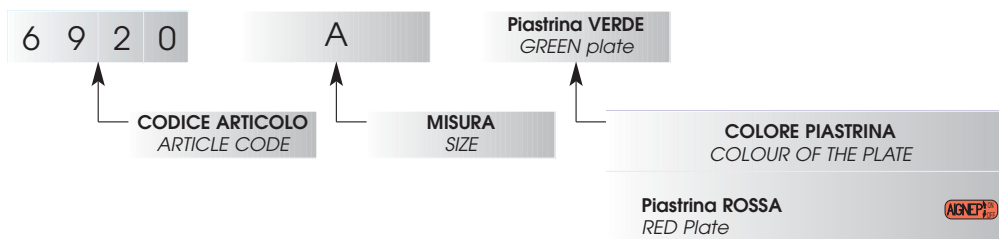
B = Per valvole da 1/2, 3/4.

A = For valves of 1/8, 1/4, 3/8.

B = For valves of 1/2, 3/4.



ESEMPIO D'ORDINE - EXAMPLE OF ORDER



Su richiesta / if required

Piastrina BLU
 BLUE Plate



Piastrina GIALLA
 YELLOW Plate



Piastrina VERDE
 GREEN Plate



Piastrina BIANCA
 WHITE Plate

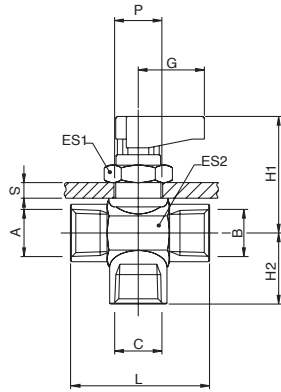


6700

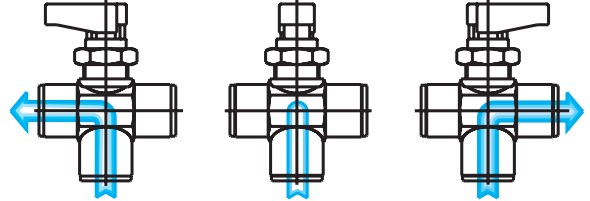
VALVOLA A TRE VIE FEMMINA G ISO 228 - 3 WAYS FEMALE G ISO 228



NO GAS



A	B	C	DN	ES1	ES2	L	G	H1	H2	SMax	P	Conf. Pack.
1/8	1/8	1/8	5	17	17	35	19	33.5	15.5	4.5	14.5	25
1/4	1/4	1/4	5	17	17	37	19	33.5	17.5	4.5	14.5	25
3/8	3/8	3/8	7	17	21	42	19	35	19.5	4.5	14.5	10

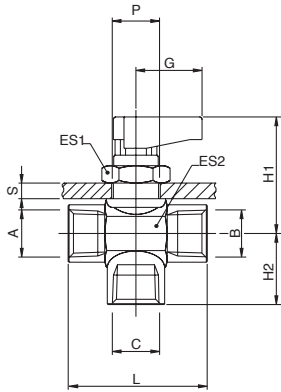


6710

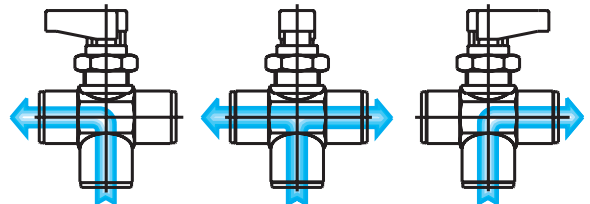
VALVOLA A TRE VIE FEMMINA G ISO 228 - 3 WAYS FEMALE G ISO 228



NO GAS



A	B	C	DN	ES1	ES2	L	G	H1	H2	SMax	P	Conf. Pack.
1/8	1/8	1/8	5	17	17	35	19	33.5	15.5	4.5	14.5	25
1/4	1/4	1/4	5	17	17	37	19	33.5	17.5	4.5	14.5	25
3/8	3/8	3/8	7	17	21	42	19	35	19.5	4.5	14.5	10

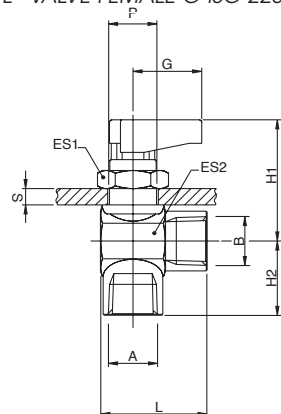


6720

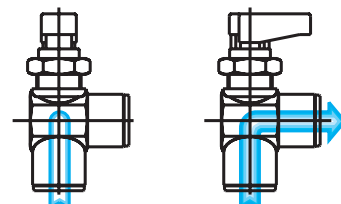
VALVOLA A "L" FEMMINA G ISO 228 - "L" VALVE FEMALE G ISO 228



NO GAS

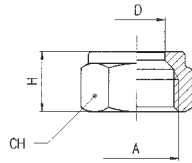


A	B	DN	ES1	ES2	L	G	H1	H2	SMax	P	Conf. Pack.
1/8	1/8	5	17	17	28.5	19	33.5	15.5	4.5	14.5	25
1/4	1/4	5	17	17	28.5	19	33.5	17.5	4.5	14.5	25
3/8	3/8	7	17	21	31	19	35	19.5	4.5	14.5	10



6680

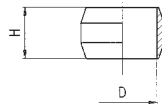
DADO - NUT



D	A	H	CH	Conf. Pack.
6	- 1/8	11	12	100
8	- 1/4	12	15	100
10	- 3/8	13	19	100
12	- 3/8	14	19	100
14	- 1/2	15	24	100
15	- 1/2	15	24	100
16	- 3/4	17	30	100
18	- 3/4	17	30	100

10740

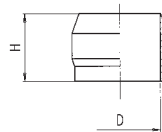
OGIVA OTTONE - BRASS OLIVE



D	H	Conf. Pack.
6	6.5	50
8	6.5	50
10	7.5	50
12	8	50
15	9	25
18	10	25

10741

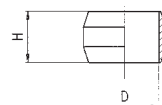
OGIVA OTTONE - BRASS OLIVE



D	H	Conf. Pack.
14	12	50
16	13.5	50

10760

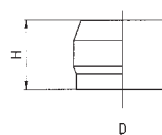
OGIVA PTFE - PTFE OLIVE



D	H	Conf. Pack.
6	6.5	50
8	6.5	50
10	7.5	50
12	8	50
15	9	50
18	10	50

10761

OGIVA PTFE - PTFE OLIVE

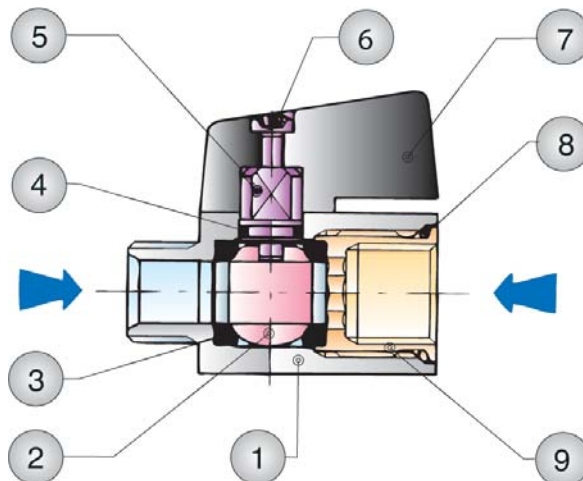


D	H	Conf. Pack.
14	12	50
16	13.5	50

Mini Valvole a Sfera | Mini Ball Valves

Le mini valvole a sfera Art. 6065 e Art. 6066 sono valvole di intercettazione del tipo ON-OFF. L'apertura e la chiusura della valvola avvengono manualmente agendo sull'alberino di comando della sfera con l'apposita maniglietta o mediante una chiave.

The mini ball valves Art. 6065 and Art. 6066 are shutoff valves type ON-OFF. The opening and closing functions are made by hand, acting on the control spindle of the ball with the handle, or operated with a spanner.



Scheda Materiali | Specifications

- 1 Corpo in Ottone nichelato
- 2 Sfera in Ottone nichelato
- 3 Guarnizione sede sfera in PTFE
- 4 Guarnizione O-RING in NBR 70
- 5 Albero in Ottone nichelato
- 6 Vite in acciaio
- 7 Maniglietta in PA66 Caricato vetro
- 8 Guarnizione O-RING in NBR 70
- 9 Ghiera o raccordo in Ottone nichelato

- 1 Nickel-plated Brass Body
- 2 Nickel-plated Brass Ball
- 3 PTFE Seats
- 4 NBR 70 Seal O-RING
- 5 Nickel-plated Brass Spindle
- 6 Steel Screw
- 7 PA66 Glass reinforced Handle
- 8 NBR 70 Seal O-RING
- 9 Nickel-plated Brass Fitting

Pressioni | Pressures

Pressione minima / Minimum Pressure: 0.99 bar (0.099MPa)
 Pressione massima / Maximum pressure: 10 bar (1 MPa)

Temperature | Temperatures

Temperatura minima / Minimum temperature: -25 °C
 Temperatura massima / Maximum temperature: +90 °C

Filettature | Threads

Gas cilindrica conforme ISO 228 Classe A / Parallel gas in conformity with ISO 228 Class A.

Tubi di collegamento | Connection Tubes

Tubi metallici in genere, raccorderia varia.

Tubes made in metal in general and various fittings.

Fluidi compatibili | Fluids

Aria compressa, acqua, vari, oli, ecc.

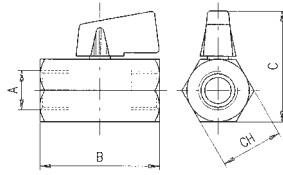
Compressed air, water, various types of oils, etc.

6065

VALVOLA A SFERA MINI FEMMINA G ISO 228 - FEMMINA G ISO 228 - MINI BALL VALVE FEMALE G ISO 228 - FEMALE G ISO 228



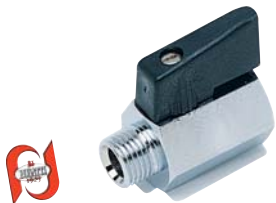
NO GAS



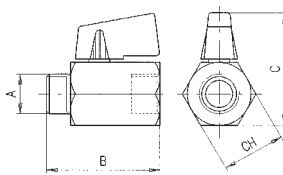
A	DN	B	C	CH	Conf. Pack.
1/8	6	39	38	21	10
1/4	8	40	38	21	10
3/8	8	42	38	21	10
1/2	10	48	42	25	10
3/4	12	54	47	30	10

6066

VALVOLA A SFERA MINI MASCHIO GA ISO 228 - FEMMINA G ISO 228 - MINI BALL VALVE MALE GA ISO 228 - FEMALE G ISO 228



NO GAS

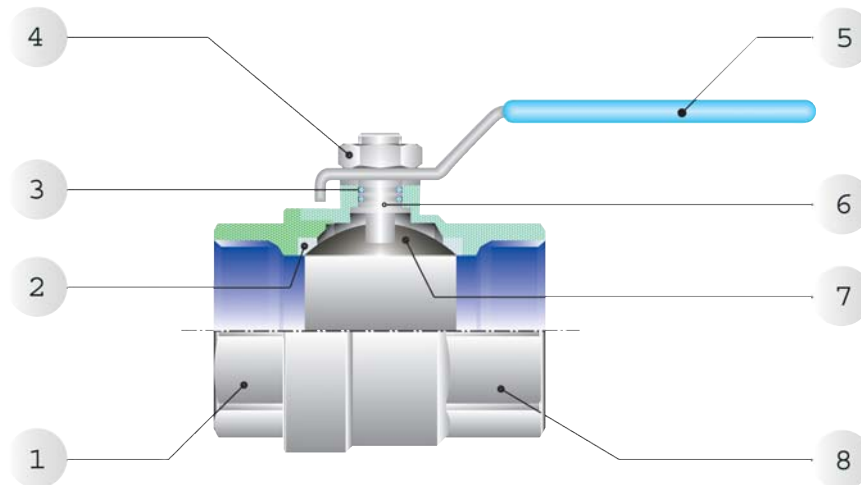


A	DN	B	C	CH	Conf. Pack.
1/8	6	39	38	21	10
1/4	8	39	38	21	10
3/8	8	40	38	21	10
1/2	10	46	42	25	10
3/4	12	51	47	30	10

Valvole a Sfera / Ball Valves

Le valvole a sfera a passaggio totale sono valvole di intercettazione del tipo ON-OFF, adatte a grandi portate. L'apertura e la chiusura avvengono manualmente agendo sull'alberino di comando della sfera con l'apposita maniglia o mediante una chiave.

The ball valves full port are shutoff valves type ON-OFF, suitable for high flow rate. The opening and closing functions are made by hand, acting on the control spindle of the ball with the handle, or operated with a spanner.

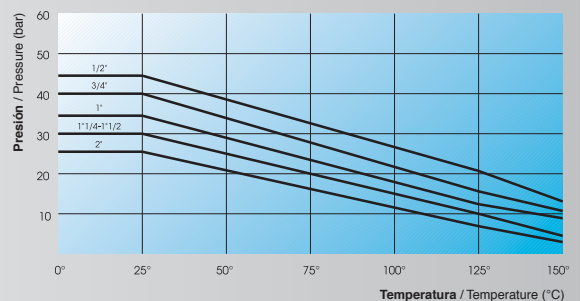


Scheda Materiali / Specifications

- 1 Raccordo in Ottone Nichelato
- 2 Guarnizione sede sfera in PTFE
- 3 Guarnizione asta in NBR
- 4 Dado per leva in Acciaio
- 5 Leva di manovra in acciaio plastificato
- 6 Asta di manovra in ottone nichelato
- 7 Sfera in ottone cromato
- 8 Corpo in ottone nichelato

- 1 Nickel-plated Brass Fitting
- 2 PTFE Seats
- 3 NBR Stem Seal
- 4 Steel Nut for lever
- 5 Steel plastified Lever handle
- 6 Nickel-plated Brass Stem
- 7 Chrome Nickel-plated Brass Ball
- 8 Nickel-plated Brass Body

**** DIAGRAMMA PRESSIONE-TEMPERATURA**
PRESSURE-TEMPERATURE RATINGS DIAGRAM

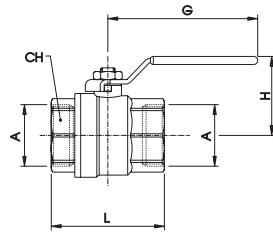


Filettature / Thread
Gas Cilindrica conforme ISO 228 classe A.
 Parallel gas in conformity with ISO 228 class A.

Tubi di collegamento / Connections tube
Tubi metallici in genere, raccorderia varia.
 Tubes made in metal in general and various fittings.

6067

VALVOLA A SFERA, FEMMINA G ISO 228 - FEMMINA G ISO 228 - BALL VALVE, FEMALE G ISO 228 - FEMALE G ISO 228



A	DN	CH	L	G	H	Conf. Pack.
1/2	15	25	46	75	47.5	10
3/4	20	31	56.5	75	51	10
1"	25	38	65.5	110	63	5
1"1/4	32	48	77	110	68.5	2
1"1/2	40	54	88.5	140	84.5	1
2"	50	67	101.5	140	92.5	1

ART.6067:

Fluidi: Aria compressa, acqua, olii.

Fino al DN20: Valgono le condizioni riportate nel diagramma Pag. 7.18**

Dal DN25 al DN50, Pressione Max: 18 bar

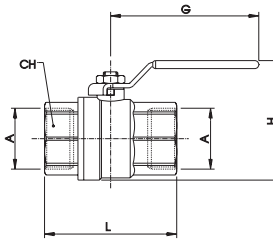
Fluid: Compressed air, water, oil.

DN 15 and 20: Use Diagram condition Pag. 7.18**

From DN25 to DN50, Max Pressure: 18 bar

6068

VALVOLA A SFERA PER GAS, FEMMINA G ISO 228 - FEMMINA G ISO 228 - GAS BALL VALVE, FEMALE G ISO 228 - FEMALE G ISO 228



A	DN	CH	L	G	H	Conf. Pack.
1/2	15	26	59	88	58	10
3/4	20	32	67.3	88	65	10
1"	25	40	77.5	90	74	5
1"1/4	32	49	92	90	85	2
1"1/2	40	55	101.5	134	100	1
2"	50	68	122.5	134	116.5	1

ART.6068:

Dal DN15 al DN50:

Fluidi: 1° e 2° Famiglia di gas a media pressione e 3° famiglia di gas a bassa pressione.

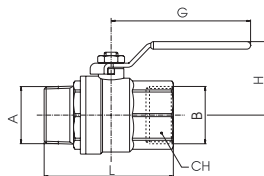
OMOLOGATE EN 331 fino a pressione Max: 5 bar

From DN 15 to 50:

Fluids: 1st and 2nd gas family to medium pressure and 3th gas family to low pressure OMOLOGATED EN331 to Max pressure: 5bar

6069

VALVOLA A SFERA MASCHIO GA ISO 228 - FEMMINA G ISO 228 - BALL VALVE MALE GA ISO 228 - FEMALE G ISO 228



A	B	DN	CH	L	G	H	Conf. Pack.
1/2	- 1/2	15	25	56	75	47.5	10
3/4	- 3/4	20	31	63.5	75	51	10
1"	- 1"	25	38	74	110	63	5
1"1/4	- 1"1/4	32	48	85	110	68.5	2
1"1/2	- 1"1/2	40	54	100	140	84.5	1
2"	- 2"	50	67	121.5	140	92.5	1

ART.6069:

Fluidi: Aria compressa, acqua, olii.

Fino al DN20: Valgono le condizioni riportate nel diagramma Pag. 7.18**

Dal DN25 al DN50, Pressione Max: 18 bar

Fluid: Compressed air, water, oil.

DN 15 and 20: Use Diagram condition Pag. 7.18**

From DN25 to DN50, Max Pressure: 18 bar

Scheda Materiali | Specifications

Corpo in ottone dal 1/4 al 2"
 Corpo in bronzo dal 2"1/2 al 4"
 Tappo in ottone
 Filtro in acciaio AISI 304
 Guarnizione corpo in NBR

Brass body from 1/4 to 2"
 Bronze body from 2"1/2 to 4"
 Brass Cap
 Steel AISI 304 Strainer
 NBR Body Seal

Pressioni | Pressures

Pressioni alle temperature di riferimento :
 Pressures to reference temperature:

18 BAR	80°C
16 BAR	100°C
10 BAR	120°C

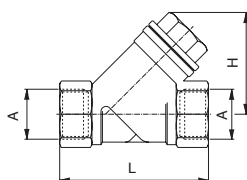
Fluidi compatibili | Fluids

Acqua, Oli.

Water, Oil.

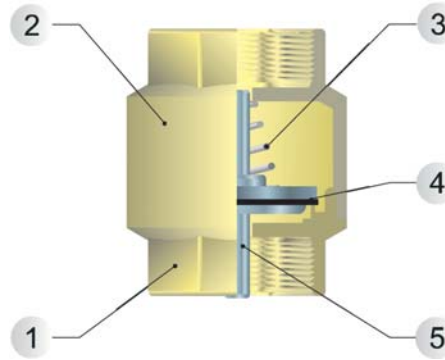
6035

FILTRO "Y" PN 20 - "Y" FILTER PN 20



A	DN	L	H	Conf. Pack.
1/4	8	55	40	10
3/8	10	55	40	10
1/2	15	58	40	10
3/4	20	70	50	10
1"	25	90	60	5
1"1/4	32	96	68	2
1"1/2	40	106	75	2
2"	50	126	90	1
2"1/2"	65	151	114	1
3"	80	172	130	1
4"	100	219	170	1

Diametro nominale Nominal diameter	8 - 10 - 15 - 20 - 25	32 - 40 - 50	65 - 80 - 100
Passo dei fori in mm Holes pitch in mm	1.5	2	2.5
Dimensione foro in mm Hole dimension in mm	0.40	0.47	0.53
Numero dei fori in per cm ² Holes per cm ²	150	80	60
Percentuale vuoto su pieno Holes percentage on total surface	33%	36%	43%



Scheda Materiali | Specifications

- | | |
|-------------------------------|--------------------------|
| 1 Corpo in Ottone | 1 Brass Body |
| 2 Coperchio in Ottone | 2 Brass Cover Cap |
| 3 Molla in acciaio inox | 3 Stainless steel Spring |
| 4 Guarnizione in NBR 65 SH/PS | 4 NBR 65 SH/PS Seal |
| 5 Otturatore in plastica | 5 Plastic Shutter |

Pressioni | Pressures

Pressione minima / Minimum Pressure: 0.99 bar (0.099MPa)
 Pressione massima / Maximum pressure: 15 bar (1.5 MPa)

Temperature | Temperatures

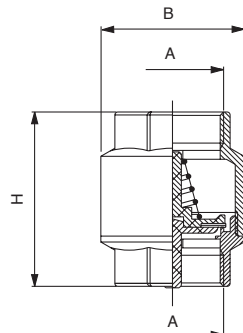
Temperatura minima / Minimum temperature: -20 °C
 Temperatura massima / Maximum temperature: +110 °C

Fluidi compatibili | Fluids

Acqua, Aria compressa, Oli.
 Water, Compressed Air, Oil.

6036

VALVOLA DI RITEGNO - NON RETURN VALVE

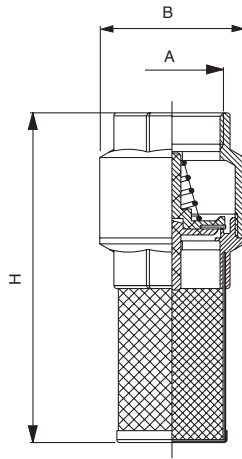


A	H	B	Conf. Pack.
1/2	49	34.5	10
3/4	53.5	42.5	5
1"	58.5	47.5	5
1"1/4	66.5	60	2
1"1/2	72	69	2
2"	77	85	1



6037

VALVOLA DI FONDO - FINAL VALVE

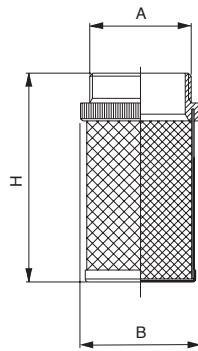


A	H	B	Conf. Pack.
1/2	91	34.5	10
3/4	100.5	42.5	5
1"	105	47.5	5
1"1/4	125	60	4
1"1/2	140	69	2
2"	160	85	1



6038

FILTRO IN RETE STIRATA - STRETCHED NET-FILTER



A	B	H	Conf. Pack.
1/2	26	50	10
3/4	32	57	5
1"	41	56.5	5
1"1/4	49	68	5
1"1/2	55	79	5
2"	68	95	1

