

# MAIR100 series

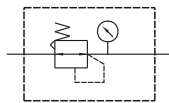
## AIR UNITS (PRECISION REGULATOR)



mindman



### Symbol



### Specification

Model	MAIR100
Bore No.	6A
Port size	1/8
Medium	Air
Max. operating pressure	1 MPa
Proof pressure	1.5 MPa
Regulated pressure range	2K: 0.005~0.2 MPa
	4K: 0.01~0.4 MPa
	8K: 0.01~0.8 MPa
Sensitivity	Within(E) 0.2% of full span
Repeatability	Within(E) ± 0.5% of full span
Ambient temperature	-5~+60°C (No freezing)
Attachment	Bracket
Option	Pressure gauge (PG-33S)
Weight	150 g

### Order example

MAIR100-6A-2K-C-□

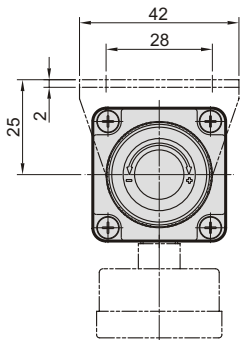
MODEL

BORE SIZE  
6A : 1/8

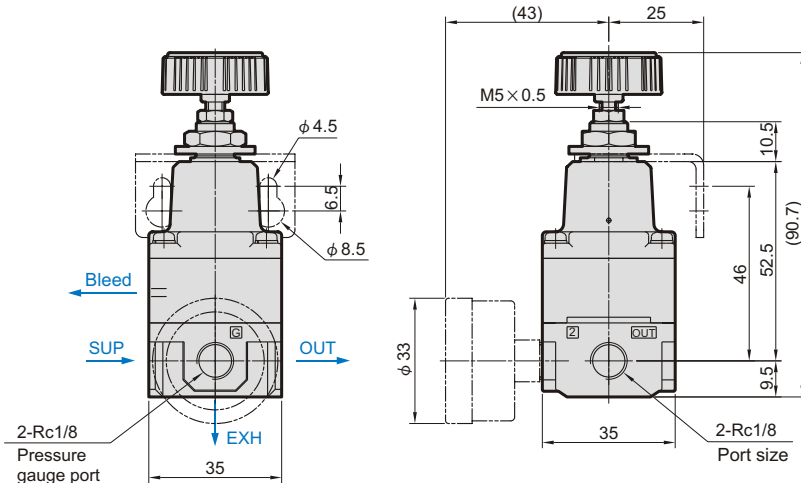
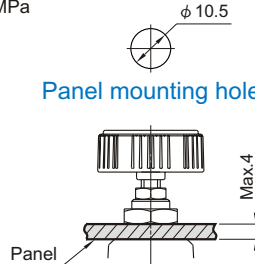
PRESS. RANGE  
2K : 0.005~0.2 MPa  
4K : 0.01~0.4 MPa  
8K : 0.01~0.8 MPa

PRESSURE GAUGE  
(PG-33S)

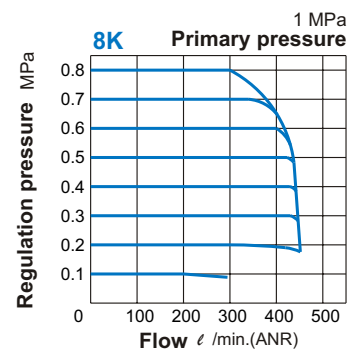
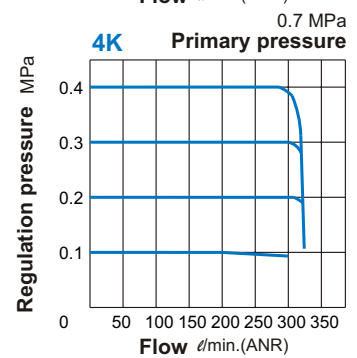
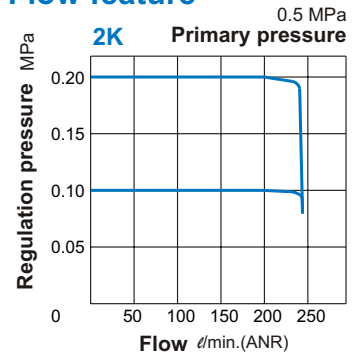
PORT THREAD  
Blank: Rc thread  
G: G thread  
NPT: NPT thread



Panel mounting hole



### Flow feature



mindman