

Hose PE, highly abrasion resistant, Version:
3.0 m (is not suitable for D1 / W2)

Hose PE, highly abrasion resistant
Version: 2.0 m



EXTRACTOR ARM, STAINLESS STEEL

with suction funnel, partially conductive,
without connecting hose to vacuum, 50 mm Ø,
Hose PE, highly abrasion resistant, Version:
3.0 m (is not suitable for D1 / W2)

Item no.: 22448



EXTRACTOR ARM, STAINLESS STEEL

with suction funnel, partially conductive,
without connecting hose to vacuum, 50 mm Ø,
Highly flexible plastic hose, Version: 3.0 m (is
not suitable for D1 / W2)

Item no : 31122



FILTER SACKS

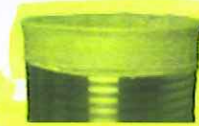
for pre-filter cell systems
for 50 litre drum, Fleece
Item no.: 22103



FILTER SACKS

for pre-filter cell systems,
for 200 litre drum, polyester needled felt, dust
class M

Item no.: 47549



FILTER SACKS

for pre-filter cell systems
for 200 litre drum, Jute
Item no.: 11026



FILTER SACKS

for pre-filter cell systems
for 50 litre drum, Jute

Item-no.: 11035



FILTER SACKS

for pre-filter cell systems
for 200 litre drum, Fleece
Item no.: 11071



FILTER SACKS

for pre-filter cell systems
for 110 litre drum, Jute

Item no.: 13894



HOSE AND ACCESSORY HOLDERS

sheet metal, RAL 7035 (grey), installation on
the wall, L: 540 mm, W: 252 mm, H: 735 mm,
for accessories, 50 mm Ø, hose approx 10.0 m
Item no.: 52886 (supplied without
accessories)



HOSE HOLDER

sheet metal, powder coated, red,
nstalled at the front
L: 330 mm, W: 123 mm, H: 238 mm
Item no: 22402

Venite e impexrom.it

PATELLI su
BRESCIA

VENITE e futuri.it
030 7660134
7641426