

CNE - CSE 6 poles + ⊕ 16A - 500V



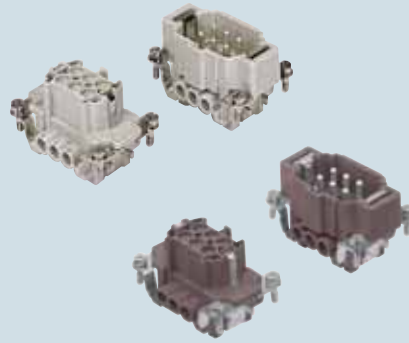
enclosures: **size "44.27"**

- standard** page: 176 ÷ 179
- for 180 °C** page: 180
- aggressive environments** page: 181
- EMC** page: 182

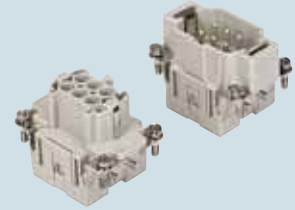
panel supports:
COB page: 258 ÷ 259

- features according to EN 61984:
- 16A 500V 6kV 3**
- UL, CSA, CCC, GL certified
- for maximum current load, see the insert load curve section on page 31

inserts, screw terminal connections



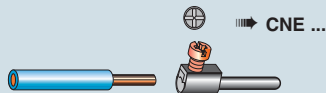
inserts, spring terminal connections



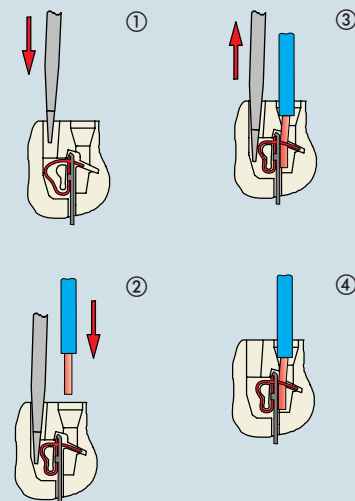
description	part No.	part No.
indirect, with plate 1) female inserts with female contacts male inserts with male contacts	CNEF 06 T CNEM 06 T	
direct, without plate 2) female inserts with female contacts male inserts with male contacts	CNEF 06 TX CNEM 06 TX	
indirect, with plate 1), use in up to 180 °C female inserts with female contacts, brown male inserts with male contacts, brown	CNEF 06 RYT * CNEM 06 RYT *	
spring terminal female inserts with female contacts male inserts with male contacts		CSEF 06 CSEM 06

- 1) for non-prepared conductors
- 2) for bush terminal conductors

* CNE...RYT version without plastic wire insertion guide cover available on request.

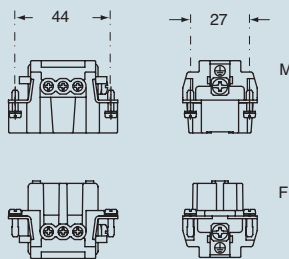


connection with spring terminal

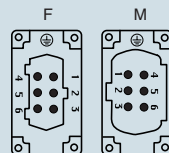


dimensions indicated are not binding and may be changed without notice

dimensions in mm

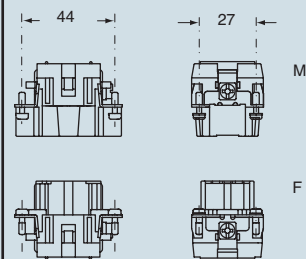


contacts side (front view)

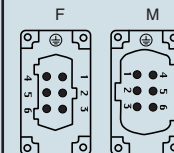


- inserts with plate, for section conductors: 0.75 ÷ 2.5 mm² - AWG 18 ÷ 14
- inserts without plate, for section conductors: 0.25 ÷ 2.5 mm² - AWG 24 ÷ 14
- torsion couple recommended for conductor fastening screws and stripping length see section feature of inserts on page 13

dimensions in mm



contacts side (front view)



- inserts for section conductors: 0.14 ÷ 2.5 mm² - AWG 26 ÷ 14
- stripping length see section feature of inserts on page 13

CNE - CSE 10 poles + ⊕ 16A - 500V



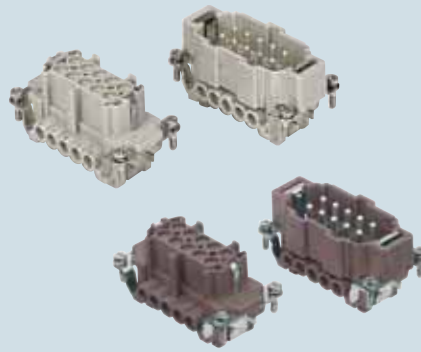
enclosures: **size "57.27"**

- standard** page: 184 ÷ 188
- for 180 °C** page: 194
- aggressive environments** page: 195
- EMC** page: 196

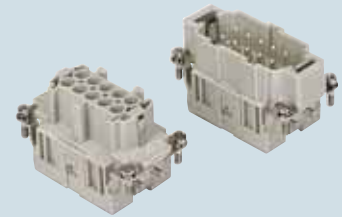
panel supports:
COB page: 258 ÷ 259

- features according to EN 61984:
- 16A 500V 6kV 3**
- UL, CSA, CCC, GL certified
- for maximum current load, see the insert load curve section on page 31

inserts, screw terminal connections



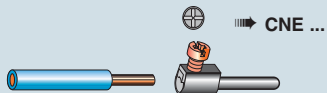
inserts, spring terminal connections



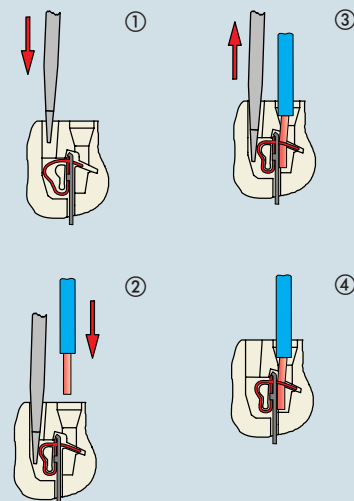
description	part No.	part No.
indirect, with plate 1) female inserts with female contacts male inserts with male contacts	CNEF 10 T CNEM 10 T	
direct, without plate 2) female inserts with female contacts male inserts with male contacts	CNEF 10 TX CNEM 10 TX	
indirect, with plate 1), use in up to 180 °C female inserts with female contacts, brown male inserts with male contacts, brown	CNEF 10 RYT * CNEM 10 RYT *	
spring terminal female inserts with female contacts male inserts with male contacts		CSEF 10 CSEM 10

- 1) for non-prepared conductors
- 2) for bush terminal conductors

* CNE...RY version without plastic wire insertion guide cover available on request.

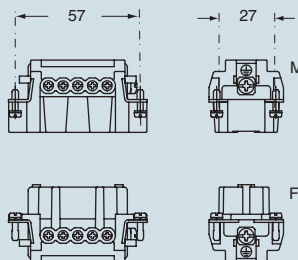


connection with spring terminal

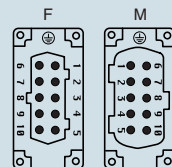


dimensions indicated are not binding and may be changed without notice

dimensions in mm

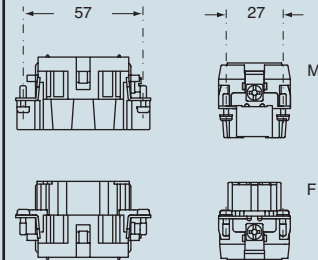


contacts side (front view)

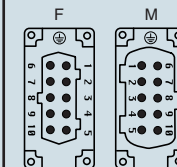


- inserts with plate, for section conductors: 0.75 ÷ 2.5 mm² - AWG 18 ÷ 14
- inserts without plate, for section conductors: 0.25 ÷ 2.5 mm² - AWG 24 ÷ 14
- torsion couple recommended for conductor fastening screws and stripping length see section feature of inserts on page 13

dimensions in mm



contacts side (front view)



- inserts for section conductors: 0.14 ÷ 2.5 mm² - AWG 26 ÷ 14
- stripping length see section feature of inserts on page 13

CNE - CSE 16 poles + ⊕ 16A - 500V



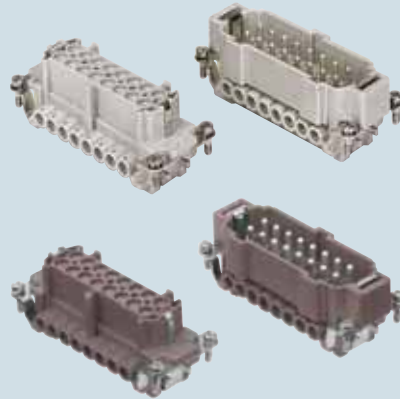
enclosures: **size "77.27"**

- standard** page: 198 ÷ 202
- for 180 °C** page: 208
- aggressive environments** page: 209
- EMC** page: 210

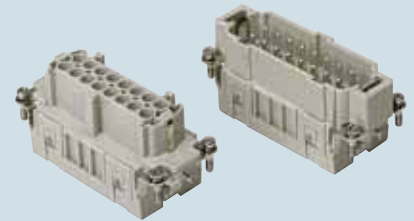
panel supports:
COB page: 258 ÷ 259

- features according to EN 61984:
- 16A 500V 6kV 3**
- UL, CSA, CCC, GL certified
- for maximum current load, see the insert load curve section on page 31

inserts, screw terminal connections



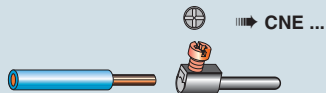
inserts, spring terminal connections



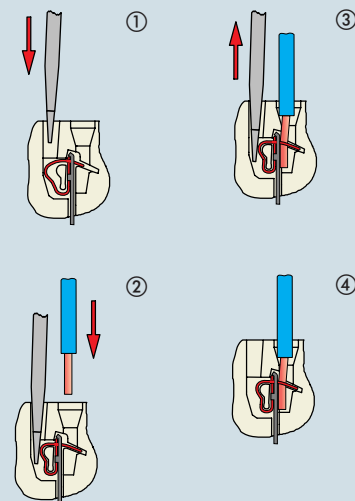
description	part No.	part No.
indirect, with plate 1) female inserts with female contacts male inserts with male contacts	CNEF 16 T CNEM 16 T	
direct, without plate 2) female inserts with female contacts male inserts with male contacts	CNEF 16 TX CNEM 16 TX	
indirect, with plate 1), use in up to 180 °C female inserts with female contacts, brown male inserts with male contacts, brown	CNEF 16 RYT * CNEM 16 RYT *	
spring terminal female inserts with female contacts male inserts with male contacts		CSF 16 CSM 16

- 1) for non-prepared conductors
- 2) for bush terminal conductors

* CNE...RYT version without plastic wire insertion guide cover available on request.

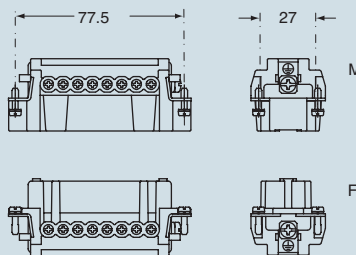


connection with spring terminal

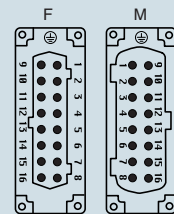


dimensions indicated are not binding and may be changed without notice

dimensions in mm

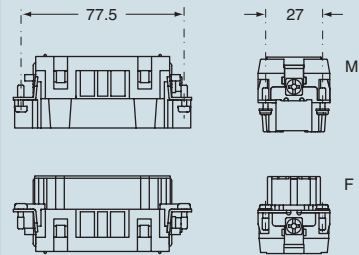


contacts side (front view)

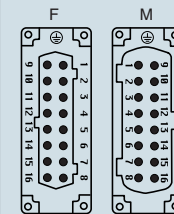


- inserts with plate, for section conductors: 0.75 ÷ 2.5 mm² - AWG 18 ÷ 14
- inserts without plate, for section conductors: 0.25 ÷ 2.5 mm² - AWG 24 ÷ 14
- torsion couple recommended for conductor fastening screws and stripping length see section feature of inserts on page 13

dimensions in mm



contacts side (front view)



- inserts for section conductors: 0.14 ÷ 2.5 mm² - AWG 26 ÷ 14
- stripping length see section feature of inserts on page 13

CNE - CSE 24 poles + ⊕ 16A - 500V



enclosures: **size "104.27"**

- standard** page: 212 ÷ 216
- for 180 °C** page: 222
- aggressive environments** page: 223
- EMC** page: 224

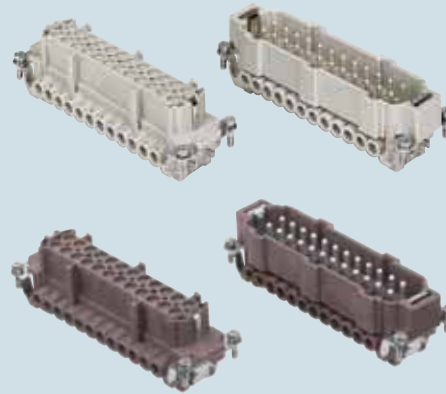
panel supports:

COB page: 258 ÷ 259

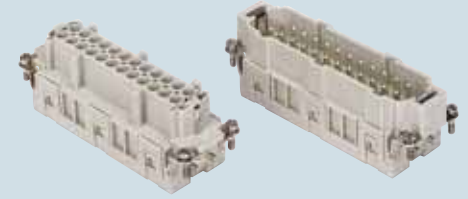
- features according to EN 61984:

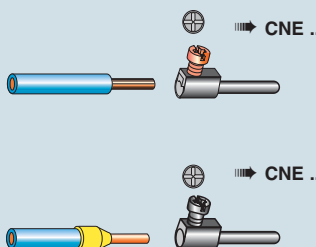
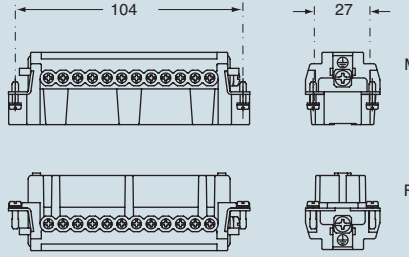
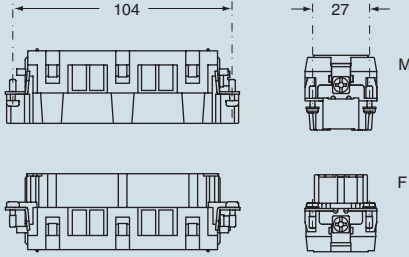
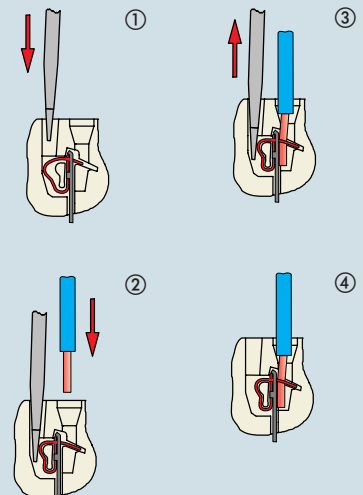
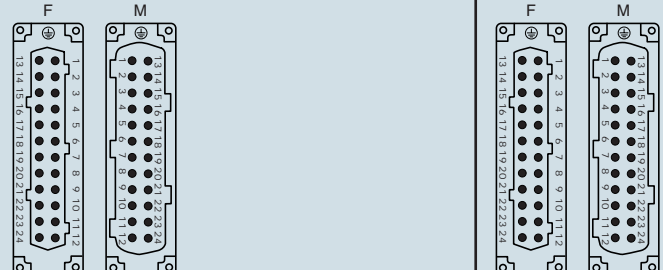
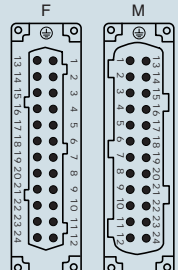
- 16A 500V 6kV 3**
- UL, CSA, CCC, GL certified
- for maximum current load, see the insert load curve section on page 31

inserts, screw terminal connections



inserts, spring terminal connections



description	part No.	part No.
indirect, with plate 1) female inserts with female contacts male inserts with male contacts	CNEF 24 T CNEM 24 T	
direct, without plate 2) female inserts with female contacts male inserts with male contacts	CNEF 24 TX CNEM 24 TX	
indirect, with plate 1), use in temperatures up to 180 °C female inserts with female contacts, brown male inserts with male contacts, brown	CNEF 24 RYT * CNEM 24 RYT *	
spring terminal female inserts with female contacts male inserts with male contacts		CSEF 24 CSEM 24
1) for non-prepared conductors 2) for bush terminal conductors	dimensions in mm	dimensions in mm
<p>* CNE...RY version without plastic wire insertion guide cover available on request.</p> 		
<p>connection with spring terminal</p>  <p>dimensions indicated are not binding and may be changed without notice</p>	<p>contacts side (front view)</p>  <ul style="list-style-type: none"> - inserts with plate, for section conductors: 0.5 ÷ 2.5 mm² - AWG 20 ÷ 14 - inserts without plate, for section conductors: 0.25 ÷ 2.5 mm² - AWG 24 ÷ 14 - torsion couple recommended for conductor fastening screws and stripping length see section feature of inserts on page 13 	<p>contacts side (front view)</p>  <ul style="list-style-type: none"> - inserts for section conductors: 0.14 ÷ 2.5 mm² - AWG 26 ÷ 14 - stripping length see section feature of inserts on page 13

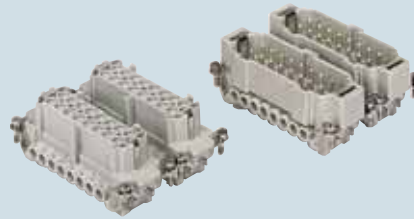
enclosures: size "77.62"

standard page: 226 ÷ 229

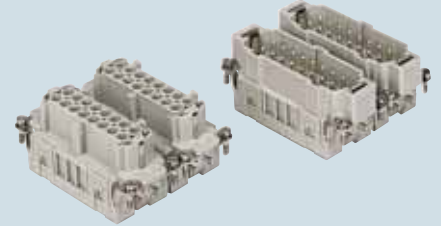
aggressive environments page: 230

- features according to EN 61984:
- 16A 500V 6kV 3**
- UL, CSA, CCC, GL certified
- for maximum current load, see the insert load curve section on page 31

inserts,
screw terminal connections



inserts,
spring terminal connections

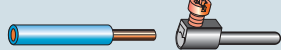


description	part No.	part No.	part No.	part No.
indirect, with plate 1) female inserts, No. (1÷16) and (17÷32) male inserts, No. (1÷16) and (17÷32)	CNEF 16 T CNEM 16 T	CNEF 16 TN CNEM 16 TN		
direct, without plate 2) female inserts, No. (1÷16) and (17÷32) male inserts, No. (1÷16) and (17÷32)	CNEF 16 TX CNEM 16 TX	CNEF 16 TXN CNEM 16 TXN		
spring terminal female inserts, No. (1÷16) and (17÷32) male inserts, No. (1÷16) and (17÷32)			CSEF 16 CSEM 16	CSEF 16 N CSEM 16 N

- 1) for non-prepared conductors
- 2) for bush terminal conductors

* CNE...RY version without plastic wire insertion guide cover available on request.

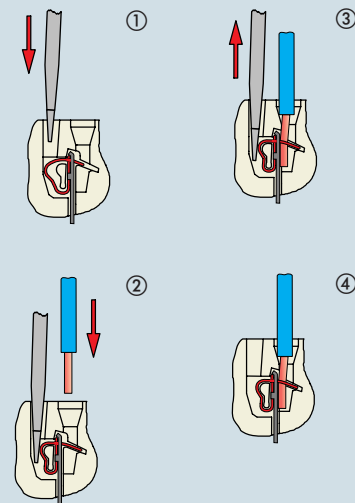
CNE ...



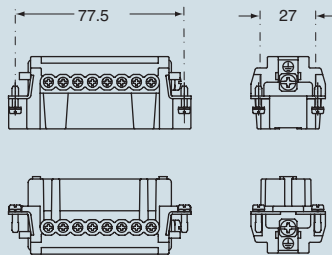
CNE ... X



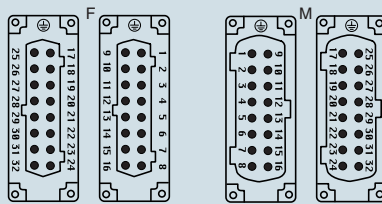
connection with spring terminal



dimensions in mm



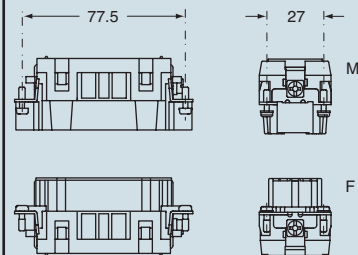
contacts side (front view)



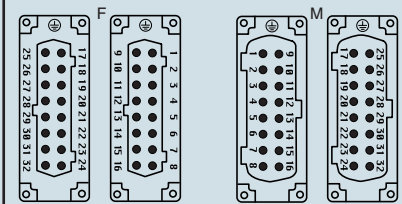
- inserts with plate, for section conductors: 0.5 ÷ 2.5 mm² - AWG 20 ÷ 14
- inserts without plate, for section conductors: 0.25 ÷ 2.5 mm² - AWG 24 ÷ 14
- torsion couple recommended for conductor fastening screws and stripping length see section feature of inserts on page 13

dimensions indicated are not binding and may be changed without notice

dimensions in mm



contacts side (front view)



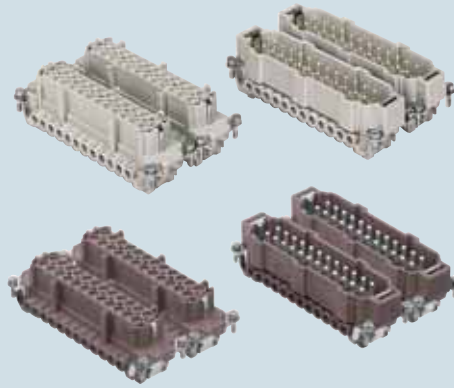
- inserts for section conductors: 0.14 ÷ 2.5 mm² - AWG 26 ÷ 14
- stripping length see section feature of inserts on page 13

enclosures: size "104.62"

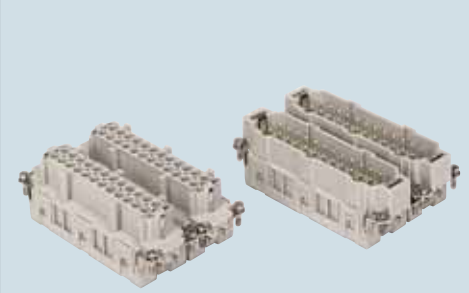
standard page: 232
 for 180 °C page: 233
 aggressive environments page: 234

- features according to EN 61984:
- 16A 500V 6kV 3**
- UL, CSA, CCC, GL certified
- for maximum current load, see the insert load curve section on page 31

**inserts,
screw terminal connections**



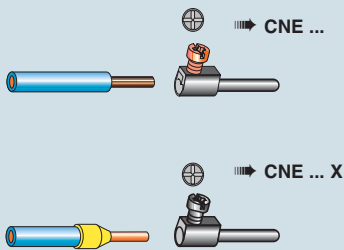
**inserts,
spring terminal connections**



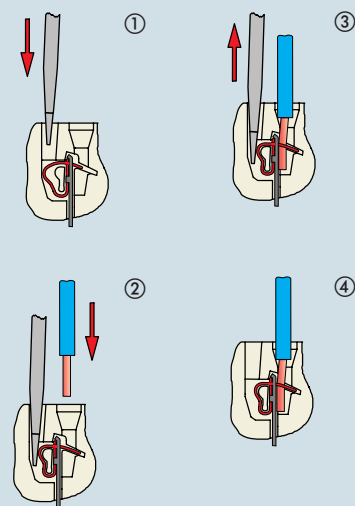
description	part No.	part No.	part No.	part No.
indirect, with plate 1) female inserts, No. (1÷24) and (25÷48) male inserts, No. (1÷24) and (25÷48)	CNEF 24 T CNEM 24 T	CNEF 24 TN CNEM 24 TN		
direct, without plate 2) female inserts, No. (1÷24) and (25÷48) male inserts, No. (1÷24) and (25÷48)	CNEF 24 TX CNEM 24 TX	CNEF 24 TNX CNEM 24 TNX		
indirect, with plate 1), use in temperatures up to 180 °C female inserts, No.(1÷24) and (25÷48), brown male inserts, No. (1÷24) and (25÷48), brown	CNEF 24 RYT * CNEM 24 RYT *	CNEF 24 RYTN * CNEM 24 RYTN *		
spring terminal female inserts, No. (1÷24) and (25÷48) male inserts, No. (1÷24) and (25÷48)			CSEF 24 CSEM 24	CSEF 24 N CSEM 24 N

- 1) for non-prepared conductors
- 2) for bush terminal conductors

* CNE...RY version without plastic wire insertion guide cover available on request.

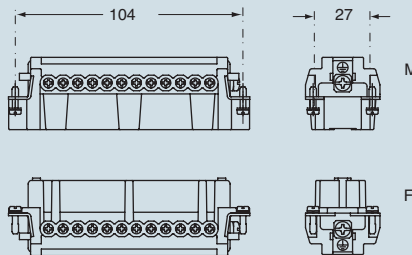


connection with spring terminal

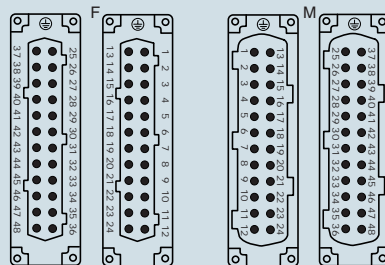


dimensions indicated are not binding and may be changed without notice

dimensions in mm

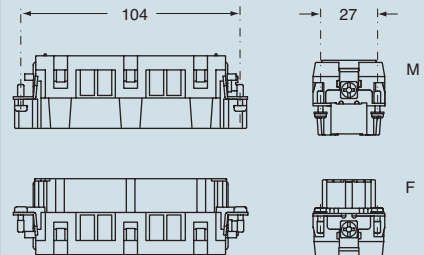


contacts side (front view)

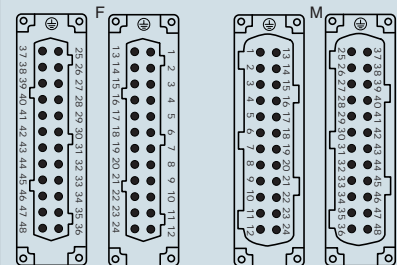


- inserts with plate, for section conductors: 0.5 ÷ 2.5 mm² - AWG 20 ÷ 14
- inserts without plate, for section conductors: 0.25 ÷ 2.5 mm² - AWG 24 ÷ 14
- torsion couple recommended for conductor fastening screws and stripping length see section feature of inserts on page 13

dimensions in mm



contacts side (front view)



- inserts for section conductors: 0.14 ÷ 2.5 mm² - AWG 26 ÷ 14
- stripping length see section feature of inserts on page 13